



**INSTITUTE OF AUSTRALIAN GEOGRAPHERS
CONFERENCE 2008**

PROGRAM

30th JUNE – 3rd JULY

UNIVERSITY OF TASMANIA

HOBART

CONFERENCE AT A GLANCE

Saturday 28 June

| | | |
|-----------|--|------------|
| 1010-1700 | Cultural Geography Study Group Meeting | Room 229 |
| 1300-1400 | Registration | Main Foyer |
| 1400-1800 | Urban Geography Study Group Meeting | Room 230 |

Sunday 29 June

| | | |
|-----------|--|--------------------|
| 0845-1230 | Excursion – Hobart – CBD to Mount Wellington | Meet at Main Foyer |
| 1000-1300 | Cultural Geography Study Group Meeting | Room 229 |
| 1030-late | Postgraduate Students Events | Venues off campus |
| 1230-1430 | Geography Heads Meeting | Room 328 |
| 1500-1800 | IAG Council Meeting | Room 328 |
| 1400-1700 | Registration | Main Foyer |

Monday 30 June

| | | |
|-----------|----------------|-------------------------------------|
| 0730-0830 | Registration | Main Foyer |
| 0830-1030 | Plenary | Physics LT1 |
| 1030-1100 | Morning tea | Main Foyer and Level 1 |
| 1100-1300 | Sessions | Various – see program |
| 1300-1400 | Lunch | Lazenbys, Refectory |
| 1400-1600 | Sessions | Various – see program |
| 1600-1630 | Afternoon tea | Main Foyer and Level 1 |
| 1630-1830 | Sessions | Various – see program |
| 1830-1930 | Opening drinks | Union Building and Fine Art Gallery |

Tuesday 1 July

| | | |
|-----------|-----------------------------|------------------------|
| 0800-0830 | Registration | Main Foyer |
| 0830-1030 | Plenary | Physics LT1 |
| 1030-1100 | Morning tea | Main Foyer and Level 1 |
| 1100-1300 | Sessions | Various – see program |
| 1300-1400 | Lunch | Lazenbys, Refectory |
| 1400-1600 | Sessions | Various – see program |
| 1600-1630 | Afternoon tea | Main Foyer and Level 1 |
| 1630-1830 | Sessions | Various – see program |
| 1830-1930 | IAG Annual General Meeting | Lecture Theatre 211 |
| 1900-1930 | Pre-dinner drinks | University Club |
| 1930-late | Institute Conference Dinner | University Club |

Wednesday 2 July

| | | |
|-----------|------------------------------|------------------------|
| 0830-0900 | Registration | Main Foyer |
| 0830-0930 | Study group meetings | Various |
| 0930-1030 | Plenary | Physics LT1 |
| 1030-1100 | Morning tea | Main Foyer and Level 1 |
| 1100-1300 | Sessions | Various – see program |
| 1300-1400 | Lunch | Lazenbys, Refectory |
| 1400-1600 | Sessions | Various – see program |
| 1600-1630 | Afternoon tea | Main Foyer and Level 1 |
| 1630-1730 | Plenary and farewell rituals | Physics LT1 |
| 1730-1830 | IAG Council Meeting | Room 328 |

Thursday 3 July

| | | |
|-----------|----------------------------|--------------------|
| 0815-1830 | Hobart to central Tasmania | Meet at Main Foyer |
|-----------|----------------------------|--------------------|

Pre-conference events

Saturday 28th June

The Urban Geography Study Group is hosting a workshop with Professor Jennifer Robinson (Open University, UK) on the theme of *City Visioning*. The workshop will consist of a number of presentations from postgraduate students and academics, and sustained discussion on ways of understanding and approaching the city.

Saturday 28th June and Sunday 29th June

The Cultural Geography Study Group will meet both Saturday (all day) and Sunday morning and, in company with Dr Hayden Lorimer, will focus on the topic *Geographies Lost and Found: Landscape, Mobility, Practice*.

The Registration Desk will be open in the Main Foyer from 1300-1400.

Sunday 29th June

A half-day field trip, *On the Mountain – a cross-section from the CBD to alpine Mount Wellington*, departs from the Main Foyer of the School at 0900. Please be ready to depart at 0845.

Postgraduates will have a jam-packed day touring Hobart's galleries and regional wine areas, followed by dinner at a local landmark pub, The Shipwright's Arms.

Geography Heads and the Institute of Australian Geographers Council will meet on the Sunday afternoon.

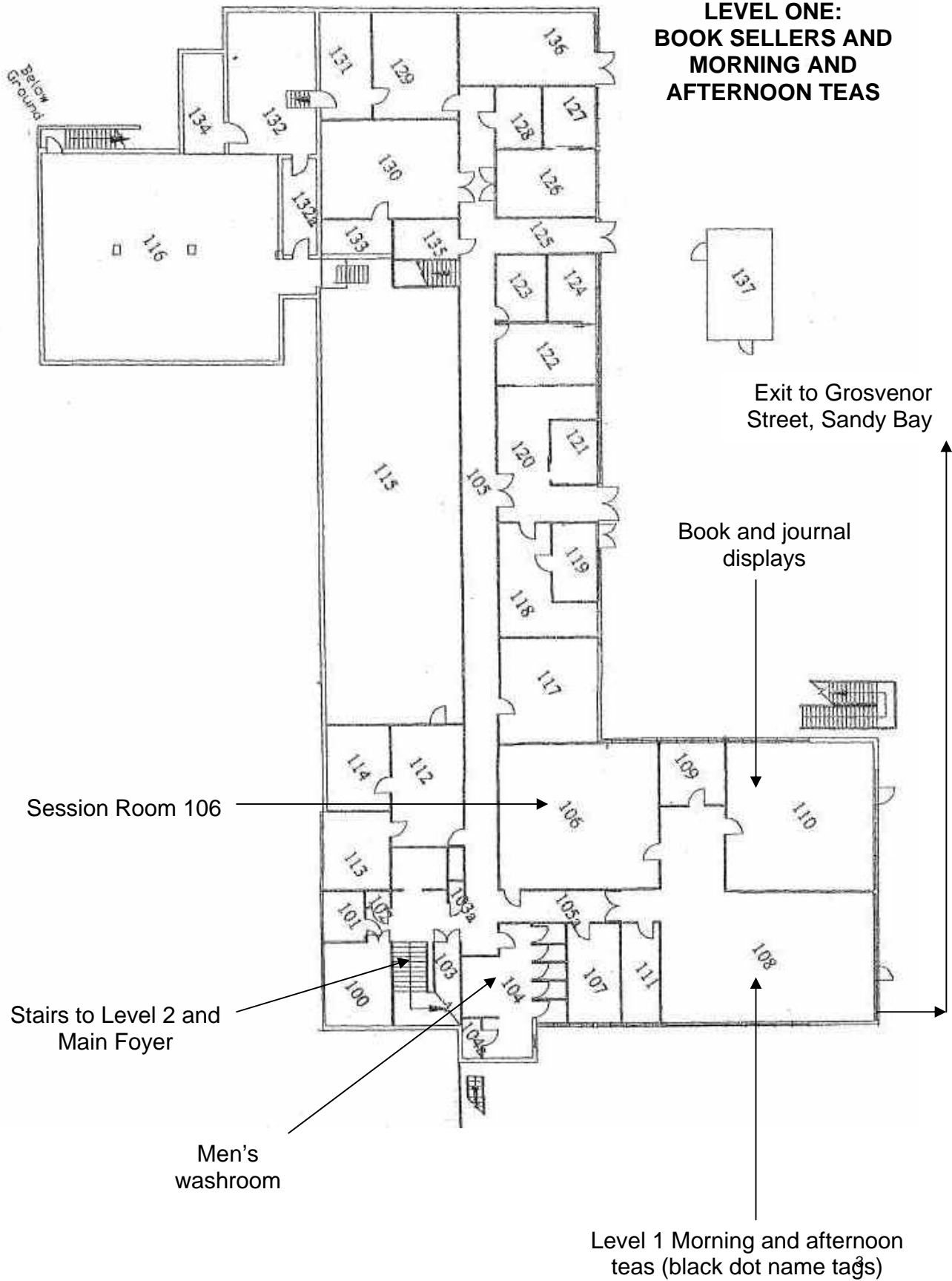
The Registration Desk will be open in the Main Foyer from 1400-1700.

Post-conference field day

Thursday 3rd July

Join Jamie Kirkpatrick and Kevin Kiernan on a day-long excursion examining resource heritage conflicts and natural environments in central Tasmania. Lunch is provided. Please be outside the Main Foyer at 0815.

**LEVEL ONE:
BOOK SELLERS AND
MORNING AND
AFTERNOON TEAS**



Below Ground

Session Room 106

Stairs to Level 2 and Main Foyer

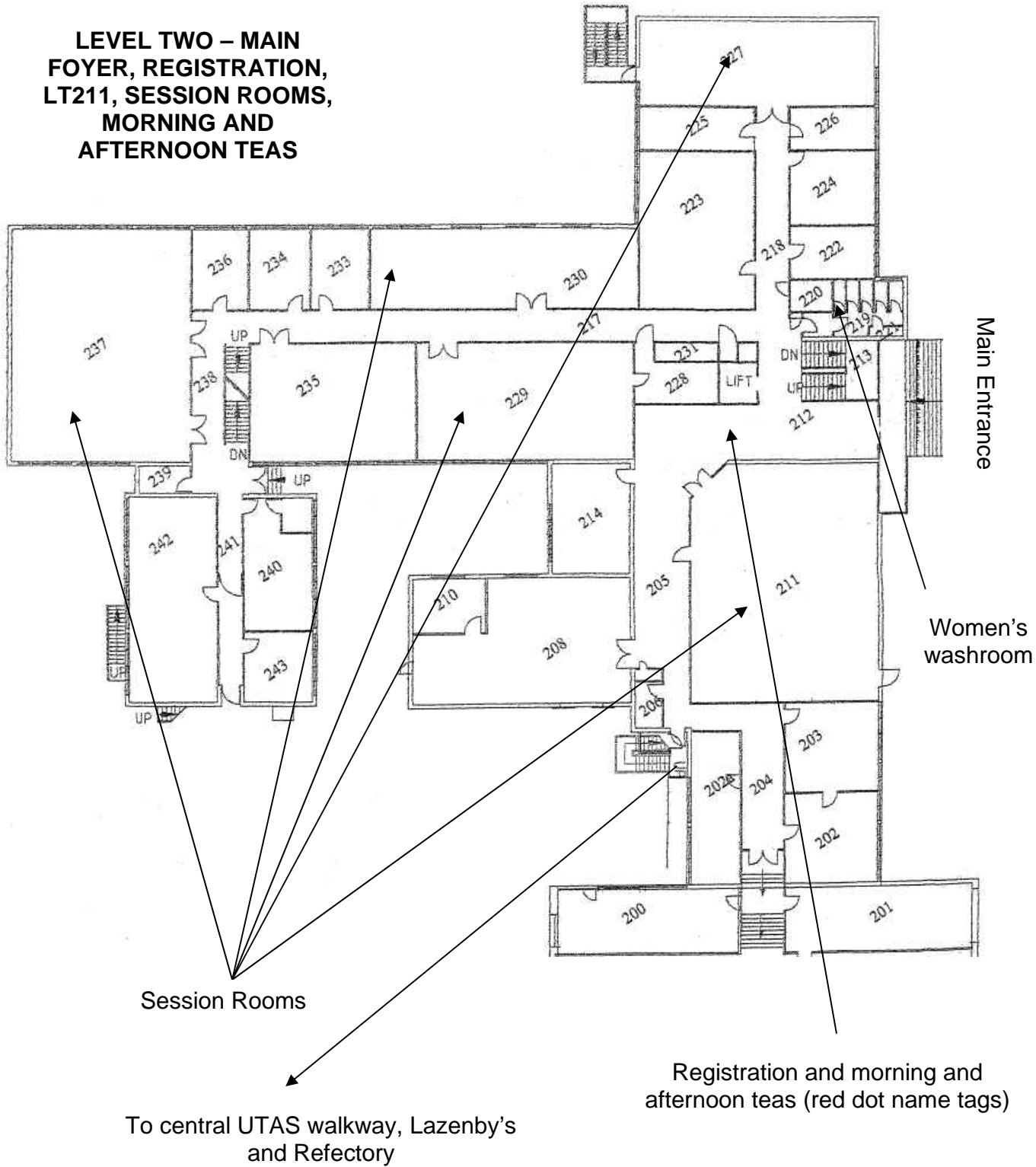
Men's washroom

Level 1 Morning and afternoon teas (black dot name tags)

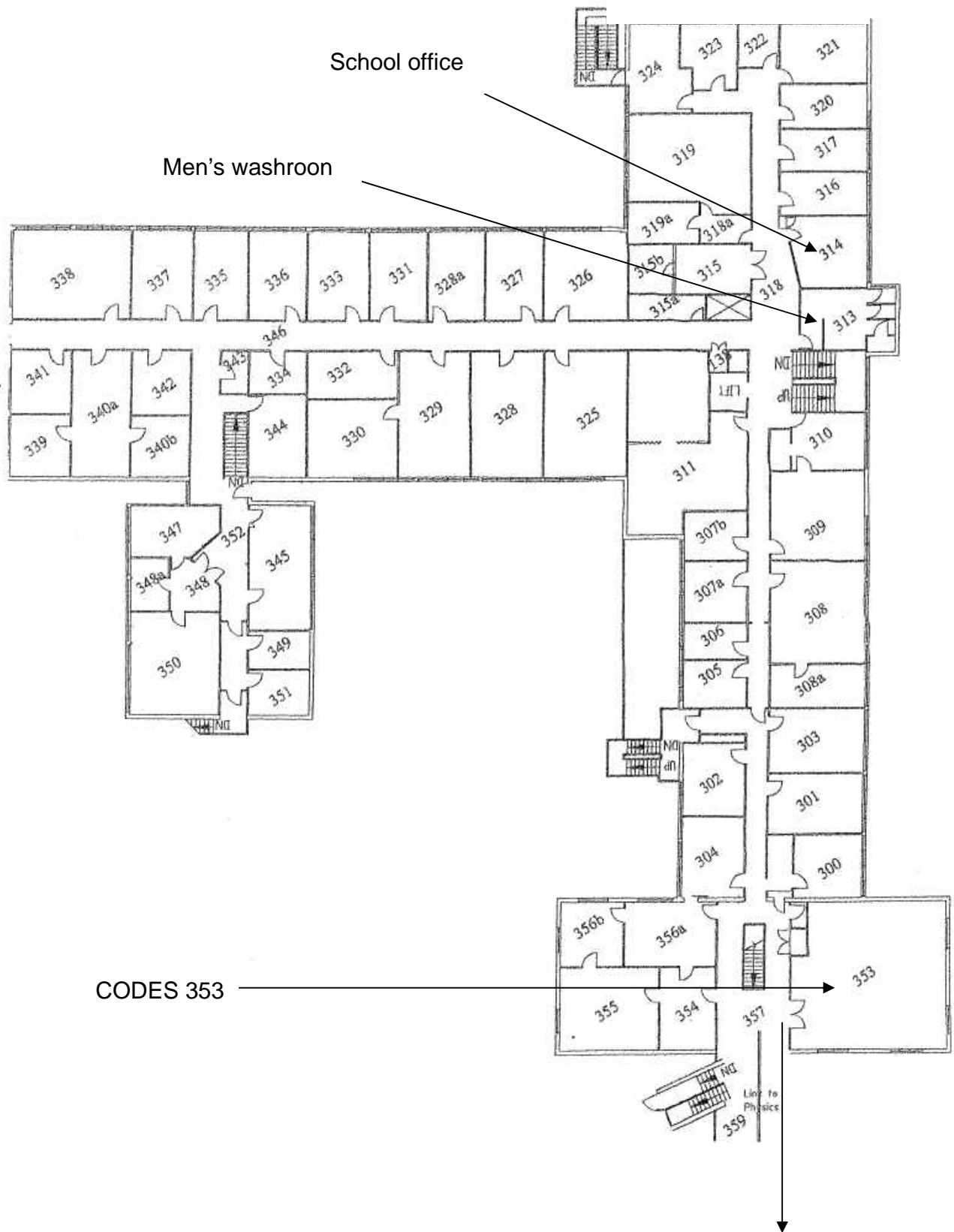
Exit to Grosvenor Street, Sandy Bay

Book and journal displays

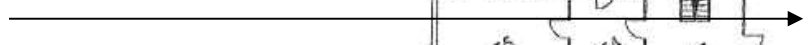
**LEVEL TWO – MAIN
FOYER, REGISTRATION,
LT211, SESSION ROOMS,
MORNING AND
AFTERNOON TEAS**



LEVEL THREE ADMINISTRATION

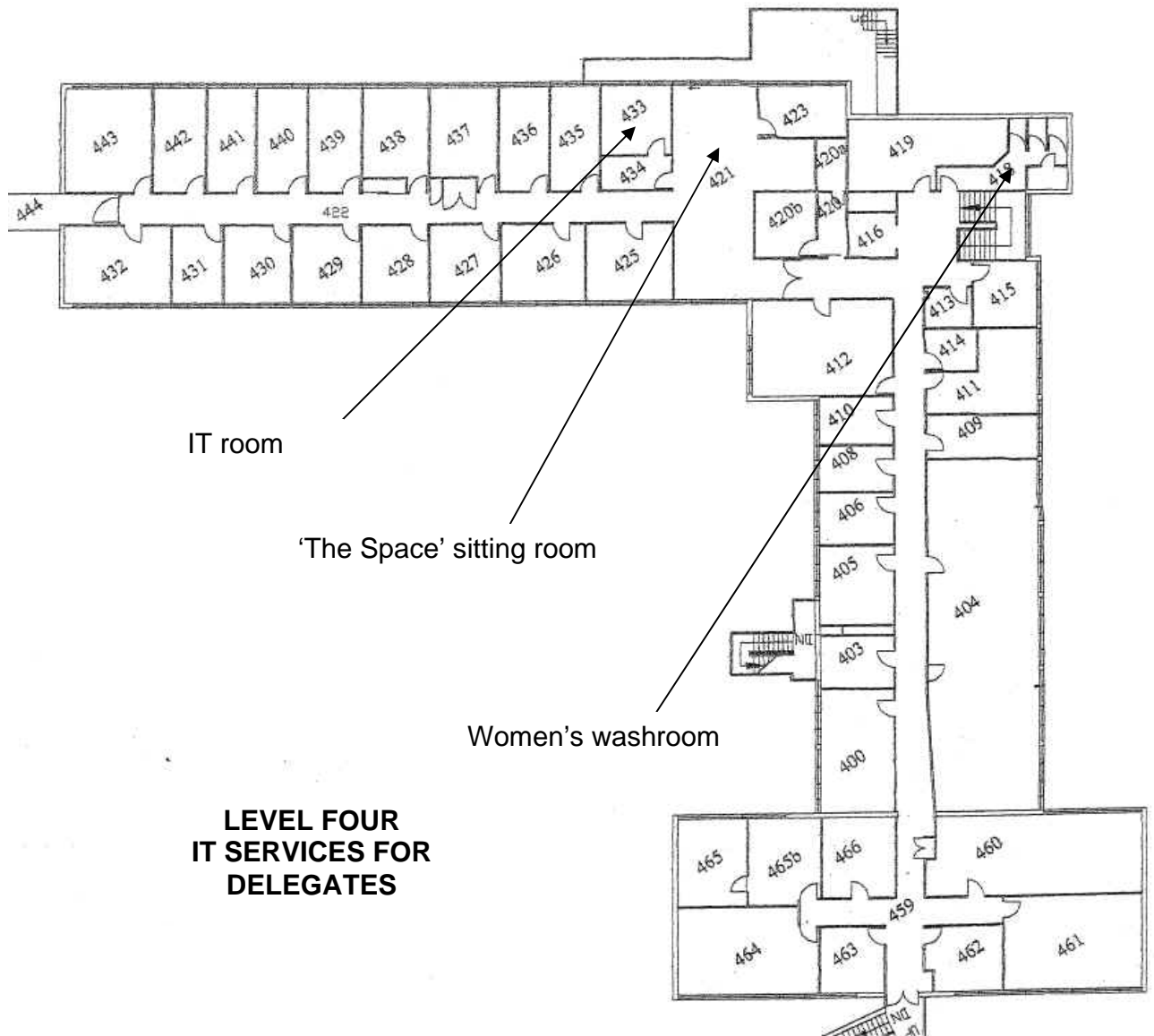


CODES 353



To Physics LT1 and Plenary Sessions,
Lazenbys and Refectory





IT room

'The Space' sitting room

Women's washroom

**LEVEL FOUR
IT SERVICES FOR
DELEGATES**

Main Program

Monday 30 June

| | | |
|------------------|--|-------------------------------|
| 0730-0830 | Registration | Main Foyer |
| 0830-0915 | Plenary A – Welcome, Presentations, Tributes Welcome to Country – Leonie Dickson Welcome to Conference – Jamie Kirkpatrick Griffith Taylor Medal Presentation – Lesley Head Distinguished Fellowship Presentation – Neil Argent Fellowship Presentation – Arthur Conacher Tribute to Professor Fay Gale – Kay Anderson Housekeeping and Segue – Elaine Stratford | Physics LT1 |
| 0915-1030 | Plenary B - Reflections on 50 Years of the IAG Jim Walmsley Harold Brookfield, Alaric Maude, John Holmes, Murray Wilson | Physics LT1 |
| 1030-1100 | Morning tea | Main Foyer and Level 1 |
| 1100-1300 | Session 1a. Urban Natures (Chairs: Sarah James and Emma Power) | Room 237 |
| 1100-1120 | Aidan Davison - Sustaining urban techno-natures: a meta-methodological reflection | |
| 1120-1140 | Mark Davidson and Donald McNeill - Rethinking the park: post-industrial landscapes | |
| 1140-1200 | Sarah James – ‘I wish I was allowed on top of Darling Harbour to put a green house.’ A (re)vision of urban growth from the fringe | |

| | | |
|------------------|--|-----------------|
| 1200-1220 | Jenny Atchison, Lesley Head and Alison Gates - Where is the wheat? Towards a new geography of Australian wheat | |
| 1220-1240 | Emma Power - Domestic temporalities: 'Nature' times in the house-as-home | |
| 1240-1300 | Kate Booth - Me and machine: A relational understanding of machines and self within the home | |
| 1100-1300 | Session 2a. | Room 227 |
| | Un(iquely) Australian? Geographies of environment and sustainability: Moving mountains (Chair: Phil McManus) | |
| 1100-1120 | Deirdre Slattery - Water for the gods? The struggle for natural values in Kosciuszko National Park | |
| 1120-1140 | Robyn Bartel - The geography of environmental sentencing | |
| 1140-1200 | Fiona Haslam McKenzie, Christina Birdsall-Jones and Steven Rowley - Doom and gloom in the boom | |
| 1200-1220 | Melissa Nursey-Bray - Sea changers and climate change: Communicating and managing risk without fear | |
| 1220-1240 | Andrew Gorman-Murray - The cultural significance of snow | |
| 1240-1300 | Glenn Mitchell, John McQuilton - 'That's nothing to do with me!' Environmental history at the frontiers | |
| 1100-1300 | Session 3a. | Room 229 |
| | Spatial technologies (Chair: Shawn Laffan) | |
| 1100-1140 | Mark Gahegan - Knowledge keeps no better than fish; something must be done about it | |
| 1140-1200 | Brian Lees, Q.K. Yang, D.L. Jupp and Shawn Laffan - The effects of re-scaling terrain variables | |
| 1200-1220 | Daming Wang - Parameterisation of morphometric features from DEMs | |
| 1220-1240 | Amy Griffin - Signal detection theory and its potential application to quantifying uncertainty in decision-making | |
| 1240-1300 | Discussion of themes | |
| 1100-1300 | Session 4a. | LT211 |
| | Performative Geographies 1. Performativity in Institutions (Chair: Lesley Instone) | |
| 1100-1120 | Jenny Cameron and Katherine Gibson - From problem-solving to performativity, expertise to experimentation: researching poverty and marginalisation | |
| 1120-1140 | Kathy Mee - Performing public housing: Performing Windale | |

- 1140-1200 Louise Askew - Performing human service delivery: The everyday practices and potentialities of interagency workers
- 1200-1220 Andrew Hubbard - Social control and the performativity of confinement
- 1220-1300 Discussion of themes

1100-1300 Session 5a. CODES 353

Developing Australian geography's postcolonial engagements with Southeast Asia and the Southwest Pacific (Chairs: Barbara Rugendyke, Philip Hirsch and Iain Hay)

This two-hour panel session will float the idea of establishing an IAG study group that brings together those interested in collaborative geographies of the SEAASWP region. It seeks to debate and shape the nature, scope, objectives and modus operandi of such a study group. Among other things, the roundtable will reflect on: the background to, current status and limitations of development geography in Australia (introduced by Barbara Rugendyke); existing networks and collaborations (introduced by Philip Hirsch); issues in postcolonial networking (introduced by Iain Hay).

| | | |
|------------------|--------------|----------------------------|
| 1300-1400 | Lunch | Lazenbys, Refectory |
|------------------|--------------|----------------------------|

1400-1600 Session 1b. LT211

Urban Residential Transformations I (Chair: Pauline McGuirk)

- 1400-1420 Iris Levin – ‘It was a nice house, we were happy there...’ Transformations of Italian houses in Melbourne and beyond
- 1420-1440 Caryl Bosman - Changing landscapes, climates and ideals of home in a hyper-neoliberal city: A Gold Coast story
- 1440-1500 Wiktoria Glad - Implementing sustainability in the socio-technical landscape of Sydney – a precinct scale analysis
- 1500-1520 Robyn Dowling - Beyond McMansions? Living in detached houses in suburban Sydney
- 1520-1540 Kevin Dunn and Therese Kenna – Selling private communities: Understanding the desires for privatised urban residential communities
- 1540-1600 Discussion of themes

1400-1600 Session 2b. Room 237

Performative Geography II: Performativity and Place (Chair: Kathy Mee)

- 1400-1420 Lesley Instone - ‘If you go down to the woods park today ...’ Performing Flockhart Reserve

| | | |
|------------------|--|-----------------|
| 1420-1440 | Patricia Macquarie - Valuing bushland as terrain: A case study of the Illawarra Escarpment | |
| 1440-1500 | Michelle Duffy and Gordon Waitt - Experiments in sound: Listening and the role of a regional music festival in (re)making social worlds | |
| 1500-1520 | Jana-Axinja Paschen - "In this country you have space to move." German tourists performing Self in Australia | |
| 1520-1540 | Natalie Smith - Drawing lines between places: Two points on the line | |
| 1540-1600 | Discussion of themes | |
| 1400-1600 | Session 3b. | Room 229 |
| | Living with Bushfire (Chair: Douglas Paton) | |
| 1400-1420 | Katharine Haynes and Amalie Tibbits - An examination of bushfire fatalities in Australia | |
| 1420-1440 | Joshua Whittaker - Vulnerability to bushfires in East Gippsland | |
| 1440-1500 | Christine Eriksen - Living with fire on the land: Local environmental knowledge for bushfire management in new rural landscapes | |
| 1500-1520 | Alison Cottrell - Understanding communities: Why locality remains important for bushfire mitigation, response and recovery | |
| 1520-1540 | Tim Prior and Douglas Paton - What's the context? Situational community characteristics and the effectiveness of bushfire risk communication | |
| 1540-1600 | Briony Towers and Douglas Paton - Children's perceptions of bushfire risk: Implications for education | |
| 1400-1600 | Session 4b. | Room 227 |
| | Multiple scales of sexual citizenship: governing sex, sexuality and non-traditional families (Chair: Andrew Gorman-Murray) | |
| 1400-1420 | Brad Ruting - Gay citizens, gay districts: Sexual citizenship, urban governance and social change in the post-industrial city | |
| 1420-1440 | Jason Prior - The unspoken landscape of sex work: Violence in New South Wales sex industry settings | |
| 1440-1500 | Sue Kentlyn - 'Sliding doors': The multiple closets of Australian State, Territory and Commonwealth regulation of queer families | |
| 1500-1520 | Karina Luzia "We're invisible here, over-visible there." The scales of same sex parenting | |
| 1520-1600 | Discussion of themes | |

| | | |
|------------------|---|-----------------|
| 1630-1830 | Session 3c. | Room 230 |
| | Living with Fire, Water and Waste (Chair: Neil Argent) | |
| 1630-1650 | Douglas Paton, Petra Bürgelt and Tim Prior - Living with bushfire risk: Social and environmental influences on preparedness | |
| 1650-1710 | Hugo Bekle and Anna Ciuppa - The water crisis: A geography of Western Australia's water policy and development | |
| 1710-1730 | Brett Davis and Gavin Birch - Applicability of generic contaminant fate models to analysis of trace metal loadings from a small highly urbanised catchment of Sydney, Australia | |
| 1730-1750 | Bruno Spandonide - Iceberg transportation for a new freshwater resource | |
| 1750-1810 | Laurence Knight - What is waste that we should account for it? | |
| 1810-1830 | Amit Bhattarai - Cultural influences on ecological footprint: A case study of Kathmandu City | |
| 1630-1830 | Session 4c. | Room 237 |
| | Performative Geography III: Performative Bodies and Politics (Chair: Jenny Cameron) | |
| 1630-1650 | Linda Malam - Samui Women's Geographies: Mapping gender roles and relations among elite Thai women | |
| 1650-1710 | Fraser MacDonald - Ludic geopolitics: Enacting the Cold War through play | |
| 1710-1730 | Anja Kanngieser - Fleeing the nation-state: Performing the radical geographies of the micro-nation | |
| 1730-1750 | Lauren Costello - Performing gender, sex and sexuality | |
| 1750-1830 | Discussion of themes | |
| 1630-1830 | Session 5c. | Room 229 |
| | Geographies of Racialisation (Chair: Wendy Shaw) | |
| 1630-1650 | Cameron McAuliffe - Wild White West: Youth and race in Western Sydney | |
| 1650-1710 | Jack Aisbett - White agendas and AIDS campaigns: AusAID's campaign to reduce the spread of AIDS in PNG | |
| 1710-1730 | Natascha Klocker - Australian construction sites and cross-cultural contact | |
| 1730-1750 | Brad Ruting - Riots on the beach: The social geographies of Sydney's Cronulla Riots | |
| 1750-1810 | Wendy Shaw - Geographies of racialisation and cities of whiteness | |
| 1810-1830 | Kevin Dunn - The racialisation of religion in everyday space | |
| 1830 | Opening Reception with Professor David Rich, Deputy Vice Chancellor (Academic) and Provost, University Union and Fine Arts Gallery | |

Tuesday 1 July

| | | |
|------------------|---------------------|-------------------|
| 0800-0830 | Registration | Main Foyer |
|------------------|---------------------|-------------------|

0830-0930 **Plenary C (Chair: Lesley Head)** **Physics LT1**

Jim Walmsley - Presidential Address: The work-life balance: geographical perspectives on lifestyle, leisure, stuff and the future

0930-1030 **Plenary D (Chair: Stewart Williams)** **Physics LT1**

Tim Cresswell - Dromologies: Towards a Politics of Mobility

| | | |
|------------------|--------------------|-------------------------------|
| 1030-1100 | Morning tea | Main Foyer and Level 1 |
|------------------|--------------------|-------------------------------|

1100-1300 **Session 1d.** **Room 227**

Memory and Materiality (Chair: Donna Houston)

1100-1120 Donna Houston - The press of memory and things: Nature, culture and the neoliberal city

1120-1140 Danielle Drozdewski - Remembering Polishness: Exploring spaces of cultural memory

1140-1200 Rosemary Overell - Memory, meaning and materiality: How cultural memory-work constitutes cultural spaces in East Gippsland

1200-1220 Tim Cresswell - Contributing objects: On memory, performance, architecture and other things

1220-1240 Brad Ruting - Nostalgic tourism: Reflections on migration and return travel

1240-1300 Rachel Hughes - Moving forward through justice? Materiality and memory on trial

1100-1300 **Session 2d.** **Room 229**

Physical and biological applications of spatial technologies (Chair: Mark Gahegan)

1100-1120 Gabrielle Caccamo, M. Santini, S. Noce, P. Molinari, R. Valentini - An integrated modelling approach to predict future scenarios of desertification risk under climate and land use change

1120-1140 Javier Leon - Coral reef geomorphology and carbonate production in Torres Strait, Northern Australia

- 1140-1200 Erin Roger, Shawn Laffan, Daniel Ramp - Connectivity and movement: the key to metapopulation persistence of common wombats
- 1200-1220 Phillipa Bricher, Arko Lucieer, D.M. Bergstrom, Jamie Kirkpatrick - A rapid field sampling method for vegetation terrain modelling and satellite image classification
- 1220-1240 Arko Lucieer, Sharon Robinson, Jenny Scott - Satellite imagery for change detection in the sub-Antarctic using Heard Island as a proof of concept
- 1240-1300 David Gillieson and Jeff Silverman - Assessing and modelling wild sandalwood stocks in Vanuatu
- 1100-1300 Session 3d. Room 230**
- Demographic change in rural spaces (Chair: Frank Vanclay)**
- 1100-1120 Neil Argent, Roy Jones, Matthew Tonts and John Holmes - Amenity-led counterurbanisation? An analysis of ex-urban migration across south-eastern and -western Australia, 2001-2006
- 1120-1140 Amanda Davies - The geography of ageing in the rural labour force
- 1140-1200 Amity James - Winds of change: Retirement expectations in non-metropolitan regions
- 1200-1220 Karen Eyles and Tony Norton - Demographic change in Tasmania and the implications for agriculture
- 1220-1240 Pyone Myat Thu - Land and dislocation: Effects of Indonesian resettlement on rural livelihoods in East Timor
- 1240-1300 Rae Dufty - Housing the people, distributing the population and defending the nation: The provision of rural public housing in Australia (1935-1955)
- 1100-1300 Session 4d. Room 237**
- Subjectivities, mobilities and fluidities: sexuality and gender 'at home' and 'on the move' in the Antipodes (Chair: Jason Prior)**
- 1100-1120 Rosie Cox - The number eight fence wire man: building masculinity and home in New Zealand
- 1120-1140 Annabel Cooper - Fictions of self and nationhood: Jane Campion's Brilliant Career
- 1140-1200 Andrew Gorman-Murray - Intimate mobilities: Embodiment and re-scaling queer migration
- 1200-1300 Discussion of themes

| | | |
|------------------|--|--------------|
| 1100-1300 | Session 5d | LT211 |
| | Urban matters (Chair: Aidan Davison) | |
| 1100-1120 | Tanya Judd - Outer suburban access to infrastructure: Insights from the Central Coast region, NSW | |
| 1120-1140 | Stephen Smith - A new electoral barometer? Exploring the electoral geography of the Greens in Australian cities | |
| 1140-1200 | Nicola Vaughan – ‘Gardens growing communities’: Positioning gardeners and gardens in Department of Housing documents | |
| 1200-1220 | Keith Jacobs - Understanding the enactment, commodification and consumption of transnational practices in contemporary Australia | |
| 1220-1240 | Bob Fagan - Feeding Sydney: Issues of scale and place in localising food systems | |
| 1240-1300 | Ozan Avci - The aesthetics of squatter settlements versus gated communities in Istanbul | |

| | | |
|------------------|--------------|----------------------------|
| 1300-1400 | Lunch | Lazenbys, Refectory |
|------------------|--------------|----------------------------|

| | | |
|------------------|---|-----------------|
| 1400-1500 | Session 1e. | Room 106 |
| | After Prosperity: The Composition of Economy and its Politics I (Chair: Phil O’Neill) | |
| 1400-1440 | John Tomaney - Regional disparities and policy in the UK | |
| 1440-1500 | Panel-led forum | |
| 1500-1600 | Session 2e | Room 106 |
| | Cultural insights (Chair: Stewart Williams) | |
| 1500-1520 | Rosemary Overell – Power and the Pink Palace: Home-making practices and gentrification in Northcote | |
| 1520-1540 | Nezih Ayiran - The search for cultural continuity in housing design on the Bodrum Peninsula, Turkey | |
| 1540-1600 | Nezih Ayiran and Ozgur Ozkan - Some proposals for public facilities in marina designs | |
| 1400-1600 | Session 3e. | Room 237 |
| | Neoliberal Natures: Elemental - Carbon and Water (Chair: Morgan Robertson) | |
| 1400-1420 | Gareth Edwards - Can neoliberalism deliver? A critique of Australia’s water reform package | |

- 1420-1440 Chris Harrington - Active participation in natural resource governance?
Community connections, networked institutions and black boxes at the Living Murray
- 1440-1500 Spike Boydell, John Shaheen and Jason Prior - Neoliberal nature – the carbon property rights conundrum
- 1500-1520 Julie Davidson and Michael Lockwood - Neoliberal methods of rule in Australian natural resource management: implications for governance
- 1520-1600 Discussion of themes

1400-1600 Session 4e. Room 229

Indigenous Issues (Chairs: Judith Burns and Richie Howitt)

- 1400-1420 Darren Venn and Hugo Bekle - Indigenous input into natural and cultural heritage management
- 1420-1440 Richie Howitt - Sustainable Indigenous futures in remote Indigenous areas: Relationships, processes and failed state approaches
- 1440-1500 Damian Lucas and Danielle Flakelar-Carney - History and Aboriginal cultural values of rivers: Recognising the historical context of Aboriginal interaction with rivers
- 1500-1520 Judith Burns – ‘All the time we were moving I was looking for that place ...’
Contemporary movement patterns of Aboriginal people in western NSW
- 1520-1540 Katharine McKinnon - Indigeneity as a political strategy
- 1540-1600 Diane Smith – Cultural geographies of indigenous regional governance

1400-1600 Session 5e. Room 230

Diverse Economies I: Networks and Ethics (Chair: Jenny Cameron)

- 1400-1420 Sarah Gall - Talkin’ sustainability in West End: The (diverse) ethics of economic life in the inner-city
- 1420-1440 Ruth Lane, Ralph Horne, Jenny Bicknell - Routes of reuse of second hand goods in Melbourne households
- 1440-1500 Miriam Williams - Supplying the ethical latte: A study of the discourses shaping the Fair Trade movement in Australia
- 1520-1540 Tim Sharp - Networks and the diverse economy of the Papua New Guinean betel nut trade
- 1540-1600 Discussion of themes

| | | |
|------------------|--|-----------------|
| 1400-1600 | Session 6e | Room 227 |
| | Pedagogy and Disciplinary Progress (Chair: Aidan Davison) | |
| 1400-1420 | Graham Thompson and Alan Pilgrim - Self-assessment and reflective learning for first-year university Geography students: A simple guide that matters much? | |
| 1420-1440 | Graham Thompson - Fieldwork matters: Finding method in the madness | |
| 1440-1500 | Alan Pilgrim - Observations on the 'thrills and spills' of a corporate-funded research project | |
| 1500-1520 | Ronlyn Duncan - Science narratives: Bridging the knowledge gaps in integrated impact assessment | |
| 1520-1600 | John Holmes - Fifty years of disciplinary flux within Human Geography: Changing sociocognitive subdisciplines and subcultures | |

| | | |
|------------------|----------------------|-------------------------------|
| 1600-1630 | Afternoon tea | Main Foyer and Level 1 |
|------------------|----------------------|-------------------------------|

| | | |
|------------------|---|-----------------|
| 1630-1830 | Session 1f. | LT211 |
| | Comparative Urbanisms – Panel Session (Chair: Therese Kenna) | |
| | This panel discussion will explore contemporary ways of understanding the city and urban spaces. The panel brings together urban geography academics with an interest in urbanism and the growth and development of cities in diverse contexts. The panel discussion will be held in conversation with Professor Jenny Robinson from the Open University, UK, author of <i>Ordinary Cities</i> (2005, Routledge). Other members of the panel will be Ruth Fincher, Sarah James, Donald McNeill and Katharine McKinnon | |
| 1630-1830 | Session 2f. | Room 237 |
| | Neoliberal Natures: Organismal – Species, Habitat and Agroecosystems (Chair: Morgan Robertson) | |
| 1630-1650 | Robin Krabbe - Community supported agriculture - full engagement or business as usual? | |
| 1650-1710 | Daniel Robinson - The neo-liberalisation of nature through intellectual property rights in plant varieties | |
| 1710-1750 | Morgan Robertson - Wetland credit markets and the problem of Assessment | |
| 1750-1810 | Robert Gale – Environmental economic geography | |
| 1810-1830 | Clive Spash - Ecosystem services valuation: a critical appraisal | |

| | | |
|------------------|--|------------------------|
| 1630-1830 | Session 3f. | Room 106 |
| | Interdisciplinary collaboration - a panel discussion sponsored by the Cultural Geography Study Group (Panelists: Roy Jones, Richie Howitt, Elaine Stratford, Kevin Dunn, Kathy Mee) | |
| 1630-1830 | Session 4f. | Room 229 |
| | Culture and Place (Chair: Keith Jacobs) | |
| 1630-1650 | Lisa Webber - A critical discourse analysis of print media portrayals of Sudanese refugees in Sydney and Melbourne | |
| 1650-1710 | Gethin Davison - Changing places | |
| 1710-1730 | David Wadley - The city of grace | |
| 1730-1750 | Carol Patterson - Middens to Home Beautiful Magazine: The millennia of habitation at Coles Bay and the Freycinet Peninsula, Tasmania | |
| 1750-1810 | Jill Sweeney - Happy mediums: Whales and the exploration of the Southern Ocean | |
| 1810-1830 | Discussion of themes | |
| 1830-1930 | IAG Annual General Meeting | LT211 |
| 1900-1930 | Pre-dinner drinks | University Club |
| 1930-1030 | 50th anniversary dinner | University Club |

Wednesday 2nd July

| | | |
|------------------|---|-------------------------------|
| 0830-0900 | Registration | Main Foyer |
| 0830-0930 | Time and space for meetings of study groups and prospective study groups Cultural Geography Study Group meeting | Room 229 |
| 0830-0930 | Meeting for those interested in forming a Climate Change and Peak Oil Study Group (Steve Turton convenor) | |
| 930-1030 | Plenary E (Chair: Rachel Hughes) Hayden Lorimer - Bio/Geo/Graphy: life in beauty's secrets and nature's surfaces | Physics LT1 |
| 1030-1100 | Morning team | Main Foyer and Level 1 |

| | | |
|------------------|--|-----------------|
| 1100-1300 | Session 1g. | Room 229 |
| | Rethinking Resources: Alternative Perspectives on Resource Studies I: Indigenous Issues and Country Case Studies (Chair: Kuntala Lahiri-Dutt) | |
| 1100-1120 | Sonia Grochain - Alternative perspectives on resources in an indigenous and first peoples context: The case of Northern Province, New Caledonia | |
| 1120-1140 | Meg Sherval - Preserving Alaska's resource integrity post-Prudhoe Bay | |
| 1140-1200 | Marcia Langton and Odette Mazel – Social license, corporate social responsibility and the resource curse: Mining and indigenous communities in Australia | |
| 1200-1220 | Jessica Weir - Natural resource management is not caring for country | |
| 1220-1240 | Matthew Allen - Rethinking resource wars: The case of the conflict in Solomon Islands | |
| 1240-1300 | Samantha Muller – The challenges of two ways: Transforming institutions for a science of equals in Yolngu land and sea management | |
| 1100-1300 | Session 2g. | LT211 |
| | Diverse Economies II: Diverse Economies, Enterprising Economies (Chair: Sarah Gall) | |
| 1100-1120 | Chris Gibson - Rural festivals in Australia: hybridities and contradictions | |
| 1120-1140 | Jenny Cameron - Supporting the community enterprise sector in Australia: Lessons from grass roots enterprises | |
| 1140-1220 | Katherine Gibson - Building community economies through social enterprise development in the Philippines: Ethical challenges and diverse pathways | |
| 1220-1300 | Discussion of themes | |
| 1100-1300 | Session 3g. | Room 237 |
| | Land use applications of spatial technologies and policy development (Chair: Arko Lucieer) | |
| 1100-1120 | Kun Zhang, Songlin Zhang, Shawn Laffan - Are government efforts being allocated to the right areas? Site selection in reducing the skewed sex ratio at birth in Shandong Province, China | |
| 1120-1140 | Rohan C Wickramasuriya, A. Bregt, H. van Delden, A. Hagen-Zanker - Modelling the dynamics of shifting cultivation using an extended Constraint Cellular Automata land use model | |
| 1140-1200 | Nathan Wales, Eleanor Bruce, R. Murphy - The use of a mixed-methods approach in understanding the influence of World Heritage zoning on forest cover change | |

- 1200-1220 Ian Gray - An argument for greater priority to be given to spatial analysis in regional rail policy-making
- 1220-1240 Steven Gibbs - The relationship between space and policy in education, health and policing
- 1240-1300 Gülçin Pulat Gökmen and Ahsen Özsoy - Emerging trends and problems of housing supply in urban housing transformation in Istanbul

1100-1300 Session 4g. Room 227

Gentrification: Antipodean Perspectives (Chairs: Matthew Rofe and Mark Davidson)

- 1100-1120 Matthew Rofe - Gentrifiers, cosmopolites, transnational elites: new facets of urban identity
- 1120-1140 Mark Davidson - Gentrification, social mix and urban policy: A study of class-based neighbourhood change in London, UK
- 1140-1200 Donald McNeill - City of villages? Neighbourhood governance in central Sydney

- 1200-1220 Andrew Van Hulst - Gentrification in Melbourne
- 1220-1240 Ruth Fincher and Kate Shaw - University students and the 'creative city'
- 1240-1300 Discussion of themes

1100-1300 Session 5g. Room 230

Applied Social Geography (Chair: Kathleen Broderick)

- 1100-1120 Sam Scott and Andrew Geddes - What is new about 'New Migration'? A case study of low-status European workers in the UK food industry
- 1120-1140 Krishna K. Shrestha and John Dee - Community participation in decentralised natural resource planning and management in Australia: Who wins, who loses?
- 1140-1200 Alan Pilgrim and Brendan Dooley - Regional Parks: From concept to the reality of managing parks in a multi-agency environment
- 1200-1220 Wendy Harte, Iraphne Childs and Peter Hastings - Emerging themes in the geography of African refugee settlement in Southeast Queensland
- 1220-1240 Andrew McGregor - Religion and development: Exploring transnational aid networks in Aceh, Indonesia
- 1240-1300 Claudette Rechterik - Implementation of a locally managed marine area (LMMA): A remote island experience in Rambutso, Papua-New Guinea

| | | |
|------------------|--------------|----------------------------|
| 1300-1400 | Lunch | Lazenbys, Refectory |
|------------------|--------------|----------------------------|

| | | |
|------------------|--|-----------------|
| 1400-1600 | Session 1h. | Room 227 |
| | Charting the geographies of contemporary urban childhoods (Chair: Karina Luzia) | |
| 1400-1420 | Anne Hurni - (Re)positioning children and young people's everyday lives in contemporary urbanism | |
| 1420-1440 | Brad Ruting - Children's citizenship in Australian cities: Avenues for child participation | |
| 1440-1500 | Vivian Romero - At risk? The changing nature of independent mobility along a child's walk to school | |
| 1500-1520 | Affrica Taylor – Children's geographies/cultural geography: De-naturalising childhood | |
| 1520-1540 | Andrew Warren - Participation of young people in the creative life of cities | |
| 1540-1600 | Discussion of themes | |
| 1400-1600 | Session 2h. | Room 230 |
| | Demographic Change in Rural Spaces II (Chair: Kathleen Broderick) | |
| 1400-1420 | Phil McManus and John Martin - Environmental and social engagement in rural heartlands | |
| 1420-1440 | Andrew Gorman-Murray - Revaluing human-environment interactions and relations in the Australian Alps in the light of climate change | |
| 1440-1500 | Frank Vanclay and Gareth Enticott - Cultural scripts as sociocultural mechanisms that influence rural understandings of human-environment interactions | |
| 1500-1520 | Janine Friedrich, Judith Crockett and Zelma Bone - More place-based community approaches to Natural Resource Management: social catchments and deliberative forums | |
| 1520-1540 | Jamie Seaton - Coming and going: The influence of population turnover on place production in the Northern Territory of Australia | |
| 1540-1600 | Blythe McLennan, T. Garvin and A. Sanchez-Azofeifa - Informing better land use decisions with qualitative research: A methodological trial in north-western Costa Rica | |
| 1400-1600 | Session 3h. | Room 227 |
| | After Prosperity: The Composition of Economy and its Politics II (Chair: Pauline McGuirk) | |
| 1400-1420 | Phillip O'Neill - Labour markets in western Sydney after a decade of prosperity | |
| 1420-1440 | Rae Dufty - Rethinking the politics of distribution | |
| 1440-1500 | Iain Hay - Geography's poverty - the super-rich | |

| | | |
|------------------|---|-----------------|
| 1500-1520 | Louise Johnson – New from old: Challenging post-Fordist Geelong | |
| 1520-1540 | Sally Weller and Andrew van Hulten - Where is the labour market in regional policy? | |
| 1540-1600 | Discussion of themes | |
| 1400-1500 | Session 4h. | Room 227 |
| | Rethinking Resources II: Alternative Perspectives on Resource Studies: Case Studies and Theoretical Perspectives (Chair: Matthew Allen) | |
| 1400-1420 | Nina Lestari - Mineral governance, conflicts, and rights: Case studies of informal mining of gold and tin in Indonesia | |
| 1420-1440 | Lisa Palmer - Embracing the diverse economy in a ‘post-conflict’ city: Resources and the undertow of custom and tradition in Baucau, Timor Leste | |
| 1440-1500 | Gavin Mudd - Rethinking the concept of finite mineral resources: Understanding the future sustainability constraints of ‘Peak Minerals’ | |
| 1500-1520 | Kuntala Lahiri-Dutt – Illicit and ‘legitimate’: Rethinking mineral extraction practices as livelihoods in India | |
| 1520-1540 | Fiona Miller – Complex systems theory, critical political ecology and geography: Exploring the possibilities for synergy in vulnerability and resilience research | |
| 1540-1600 | Douglas Hill – Power, space and scale: Rethinking the politics of water and forest resources | |
| 1400-1600 | Session 5h. | LT211 |
| | Geographic Ecology (Chair: Jamie Kirkpatrick) | |
| 1400-1420 | David Gillieson - Woody thickening in northern savannas: Towards a brown and black ecology | |
| 1420-1440 | Laurence Knight - Twitchers, Ornithologists or Bird-Lovers? Mapping a Virtual Community of Birdwatchers in Australia. | |
| 1440-1500 | Hugo Bekle - Trans-equatorial migratory birds and avian influenza: An Australian perspective | |
| 1500-1520 | Desiree Moon and Hugo Bekle - Avian invasion within the Southwest region of Western Australia | |
| 1520-1540 | Ivars Reinfelds, Marcus Lincoln-Smith, Tim Haeusler and David Ryan - Hydraulic assessment of flow regimes to facilitate fish passage through natural riffles: Shoalhaven River below Tallowa Dam, New South Wales, Australia. | |
| 1540-1600 | Robert Gale - On the ITQ system in NSW fisheries | |

| | | |
|------------------|--|-------------------------------|
| 1600-1630 | Afternoon Tea | Main Foyer and Level 1 |
| 1630-1715 | Plenary F (Chair: Elaine Stratford) Ronlyn Duncan – A question of balance: A path to sustainability or business-as-usual? The Basslink case | Physics LT1 |
| 1715-1730 | Farewell rituals | |
| 1730-1830 | IAG Council Meeting | Room 328 |

Thursday 3rd July

0815-1800 Kevin Kiernan and Jamie Kirkpatrick: Guided excursion to central Tasmania.
Meet at the Main Foyer